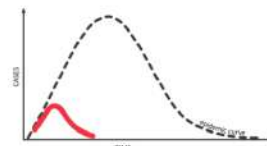


# First Covid-19 case in Somaliland detected through CBS



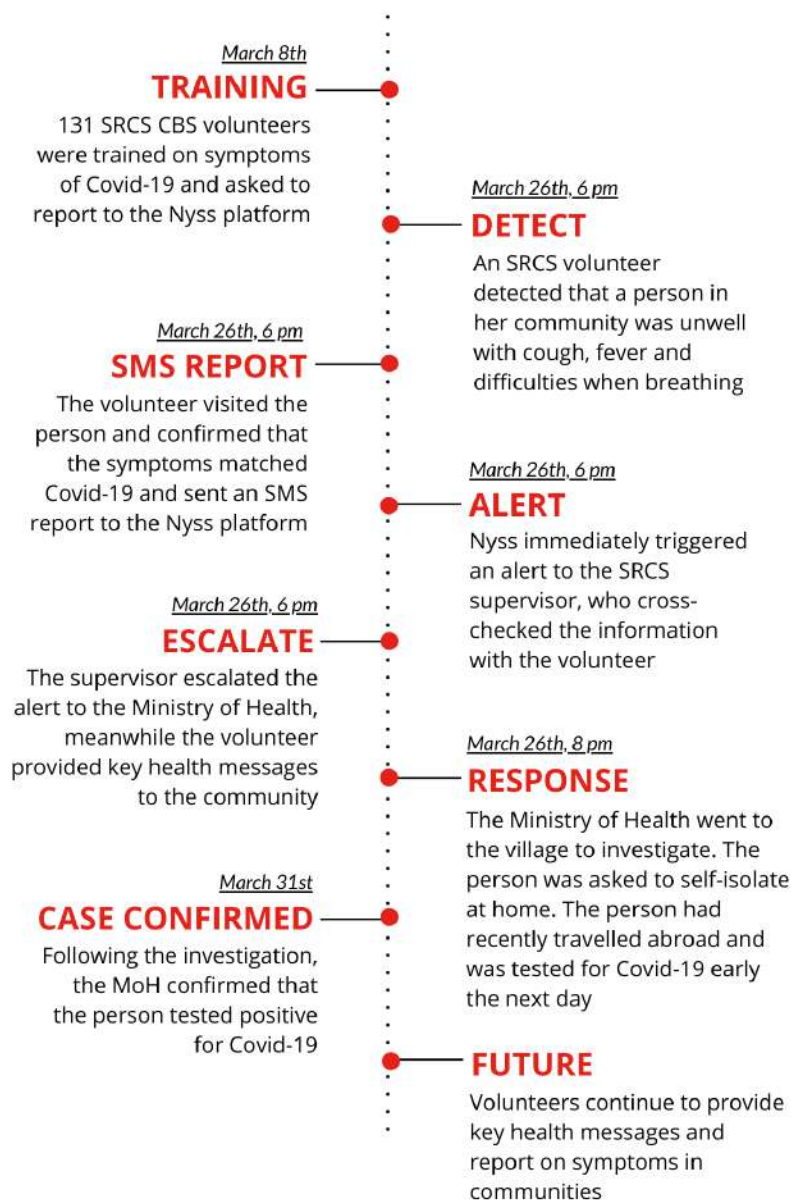
Since May 2018, Ururka Bisha Cas (the Somalia Red Crescent Society, SRCS) has been active in Somaliland with community-based surveillance (CBS), aiming at early detection, warning and response to potential outbreaks. When Covid-19 became a global threat, SRCS quickly adapted their early warning tool by training CBS volunteers to detect signs and symptoms of Covid-19 in communities. Although never used for Covid-19 before, the first case was detected in Somaliland through CBS. This provided early warning to health authorities, who initiated early response to limit community transmission, thereby saving lives.



CBS and Nyss help health authorities detect early, act fast and save lives

## Early detection, early response

When Covid-19 became a global threat, SRCS adapted their early warning tool to detect signs and symptoms in communities.



**Community-based surveillance (CBS)** is the systematic detection and reporting of events of public health significance within a community by community members.

**Nyss** is a custom software platform for data collection, management and analyses; tailored to the needs of the Red Cross Red Crescent Movement for CBS.



## CBS works for Covid-19 detection

CBS detected one of the first two cases in Somaliland and has contributed to early detection to fight Covid-19 transmission. By detecting the case early, the person was isolated early. This limits community transmission, while also triggering more health promotion activities in the community by SRCS. Further, early detection enabled rapid response from the Ministry of Health. This case proves that **early warning through community volunteers is key in fighting Covid-19**